



## Features

- Historic retail building in a prime area of downtown Bridgeport
- Massive glass windows overlooking Main Street and the People's United Bank headquarters
- Prime setting for retail or creative office space
- 1 block from train station and Port Jefferson ferry
- Easy I-95 and Route 8/25 Connector access

## Neighborhood

**Downtown Bridgeport** - Across from the People's United Bank Headquarters, just one block from the Bridgeport Transportation Center (MTA, Amtrak, local and regional bus service). Walk to nearby restaurants, shops, cafes, bars and more.

## Availability

From 1,500 - 4,000 SF

Retail Rent: \$13.00 PSF NNN

## Contact

**SCOTT RAASCH** *Director of Business Development*  
T.203.286.5813 / [sraasch@forstonecapital.com](mailto:sraasch@forstonecapital.com)

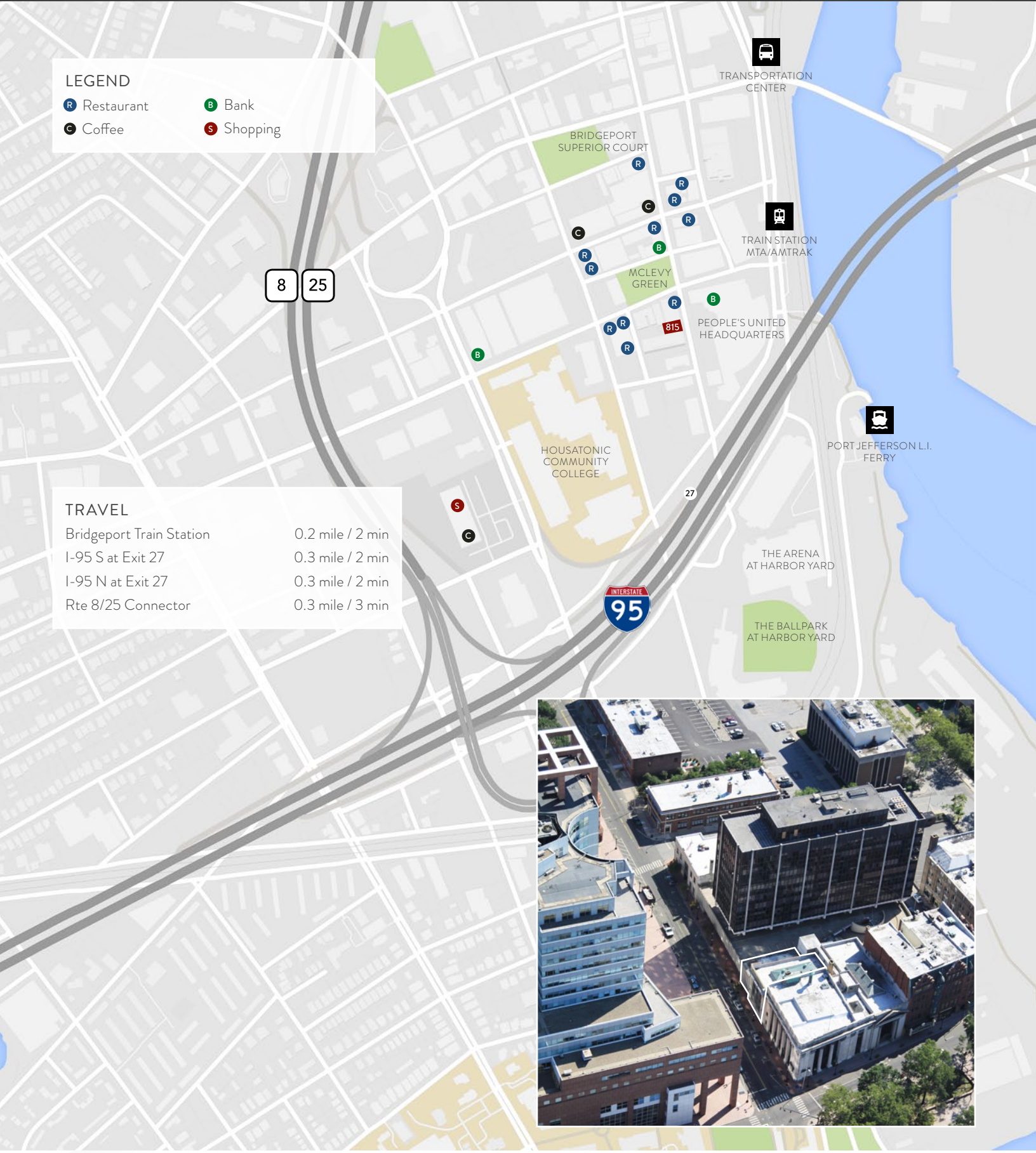


**LEGEND**

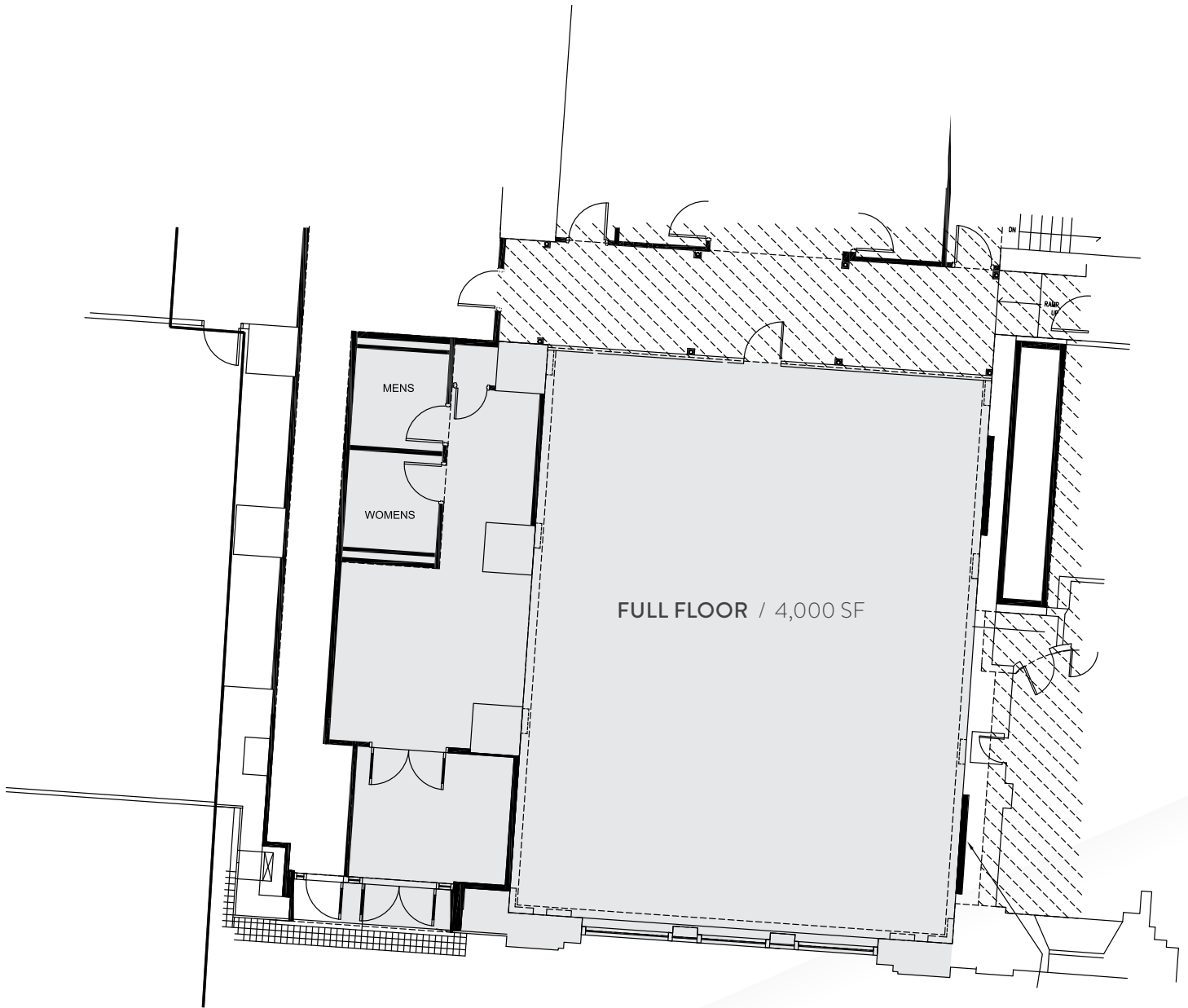
- R Restaurant
- B Bank
- C Coffee
- S Shopping

**TRAVEL**

Bridgeport Train Station	0.2 mile / 2 min
I-95 S at Exit 27	0.3 mile / 2 min
I-95 N at Exit 27	0.3 mile / 2 min
Rte 8/25 Connector	0.3 mile / 3 min



# Ground Floor Retail



Main Street